



SNB CHECK CAPTURE

Installation Guide

February 2007

Table of Contents

Table of Contents	2
Figures	2
Introduction	3
How to Get Help	3
Choosing between the SmartClient and WebClient	3
System Requirements	3
Installation	4
Step 1: Unpack your scanner	4
Step 2: Connecting cables to the scanner	5
Step 3: Installing the Scanner Software Drivers	7
Panini MyVisionX	7
RDM	8
Step 4: Attaching the scanner to your PC	9
Step 5: Installing the Check Capture SmartClient	11
Verifying .NET Compatibility	11
Installing the SmartClient software	12
WebClient Setup	14

Figures

Figure 1: Panini MyVisionX scanner	4
Figure 2: Cable connections on the back of the Panini MVisionX	5
Figure 3: Plugging the power supply into the scanner	5
Figure 4: Installing an ink cartridge in the Panini MyVisionX scanner	6
Figure 5: Installing the check feeder on a Panini MyVisionX scanner	6
Figure 6: SNB Check Capture Tech Support web page	7
Figure 7: Contents of the Panini MyVisionX scanner driver ZIP file	7
Figure 8: Found New Hardware Wizard	9
Figure 9: Hardware installation alert message	9
Figure 10: Completing the Found New Hardware Wizard	10
Figure 11: SNB Check Capture Support Page	12
Figure 12: SmartClient installation dialogue box	12
Figure 13: SmartClient installation progress dialogue box	13
Figure 14: SmartClient login dialogue box	13
Figure 15: SmartClient location & scanner registration	13
Figure 16: SNB Check Capture web page	14
Figure 17: WebClient login page	14

Introduction

This document provides the step-by-step instructions necessary to install SNB Check Capture. A successful installation involves the following steps:

1. Installation of the scanner software drivers
2. Installation of the scanner hardware to your PC
3. Installation of the SNB Check Capture SmartClient OR access to the SNB Check Capture WebClient via the internet.

How to Get Help

Should you need assistance installing or using SNB Check Capture, please contact the SNB Business Client Services department:

- By telephone: **888.762.4762 ext. 101362**
- By e-mail: Business_Client_Services@banksnb.com

Choosing between the SmartClient and WebClient

There are two versions of SNB Check Capture. You may use either or both based on your requirements:

1. **SmartClient** – a “thick” client version recommended for organizations with higher check volumes, typically 10 or more per day. The SmartClient allows the user to see only deposits processed on the PC where it is installed.
2. **WebClient** – a “thin” client version ideal for organizations with lighter check volumes, typically between one and 10 checks per day. The WebClient allows the user to see deposits from **all** PCs in that organization which are using SNB Check Capture.

SNB recommends that you not attempt to install SNB Check Capture until you have received your login credentials from SNB Business Client Services.

System Requirements

- Software
 - Microsoft Windows 2000 or XP
 - Internet Explorer 5.5 or above
 - .NET Framework 2.0
- Hardware
 - 512 MB of memory
 - 1 GB of available hard disk storage
 - An available USB port (USB 2.0 recommended)
 - High-speed Internet connection

Installation

Step 1: Unpack your scanner

Start the installation process by taking your scanner out of the box. The scanner and its primary components are pictured below:



Figure 1: Panini MyVisionX scanner

- A. Panini MyVisionX scanner
- B. Power supply and cord
- C. USB cable
- D. Check feeder
- E. Ink cartridge

Step 2: Connecting cables to the scanner

During this step, you will connect the power and USB cables to the scanner.

IMPORTANT: DO NOT PLUG THE USB CABLE FROM THE SCANNER INTO YOUR PC DURING THIS STEP (this will occur later in the installation process).

The cables plug into the back of the scanner. The cable receptacles are pictured below:

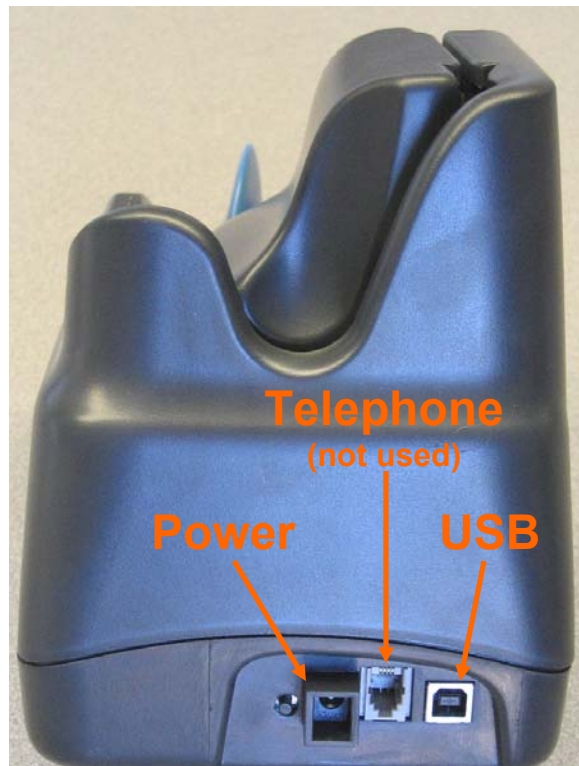


Figure 2: Cable connections on the back of the Panini MVisionX

1. Plug the power cable into the scanner:



Figure 3: Plugging the power supply into the scanner

2. Remove the scanner cover and install the ink cartridge:

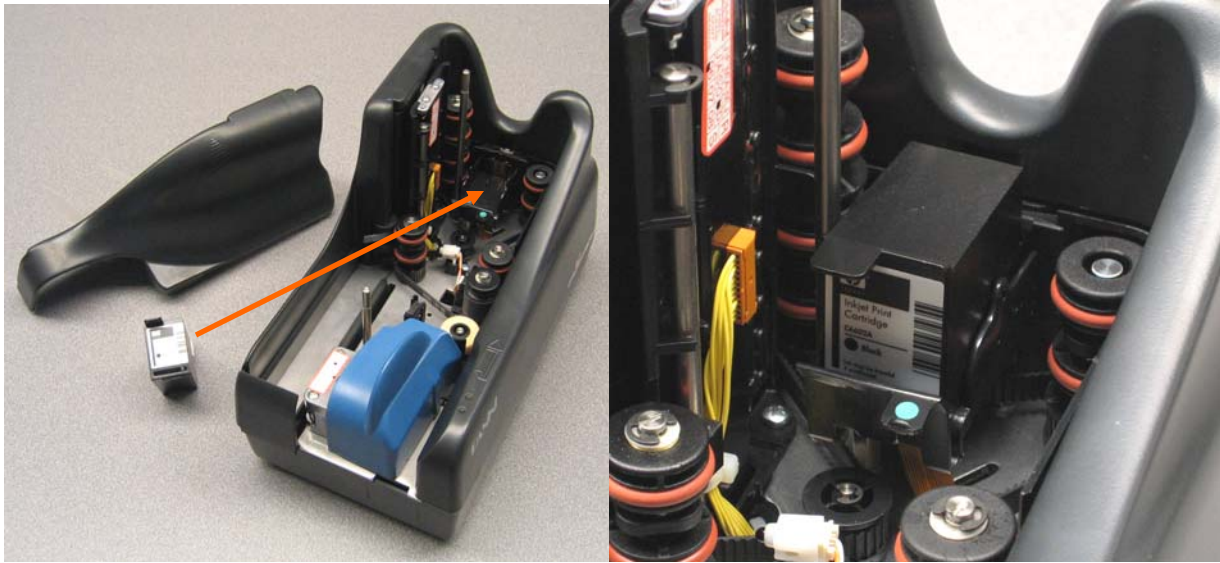


Figure 4: Installing an ink cartridge in the Panini MyVisionX scanner

3. Attach the check feeder to the scanner:



Figure 5: Installing the check feeder on a Panini MyVisionX scanner

4. Plug the scanner power supply into a power outlet.

Step 3: Installing the Scanner Software Drivers

The scanner software drivers are available for download from the SNB Check Capture Technical Support Resources web page:

http://www.banksnb.com/business/cash_mgmt/collections/checkcap_support.asp

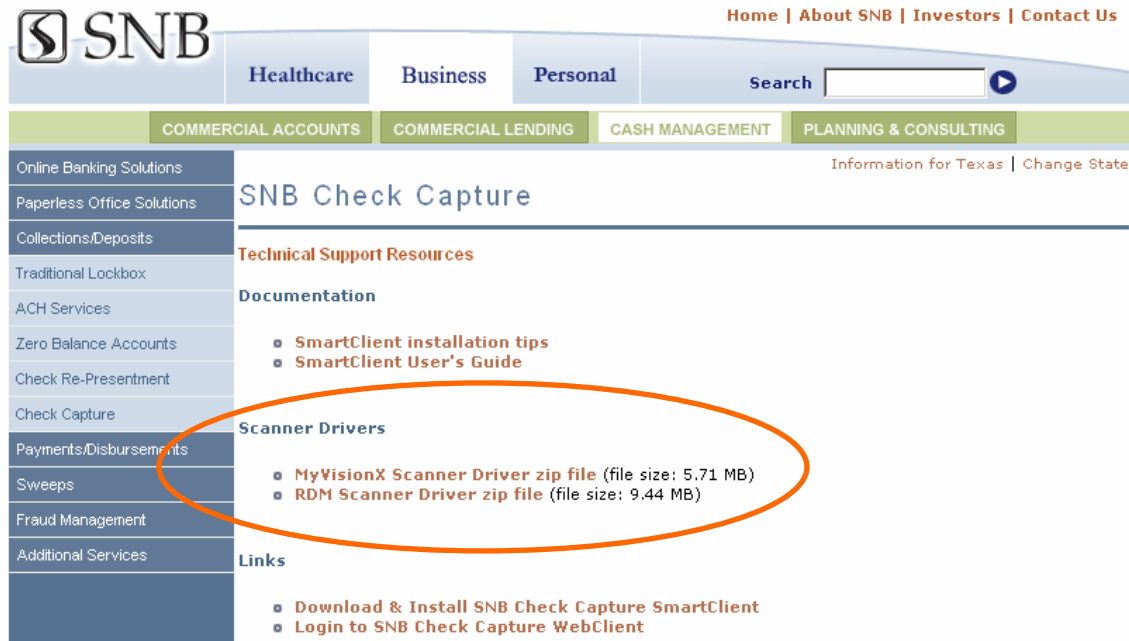


Figure 6: SNB Check Capture Tech Support web page

Click on the appropriate scanner driver link and save the file to the PC on which you will install the scanner. After downloading the file, double click on it to “unzip” the file.

Panini MyVisionX

This screen appears after double-clicking the downloaded scanner driver ZIP file:

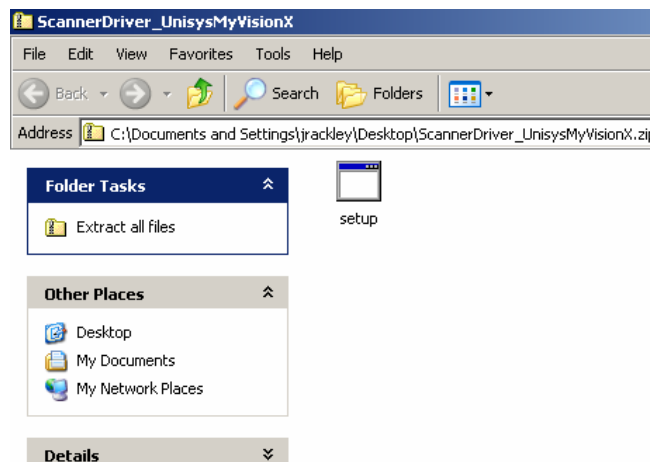
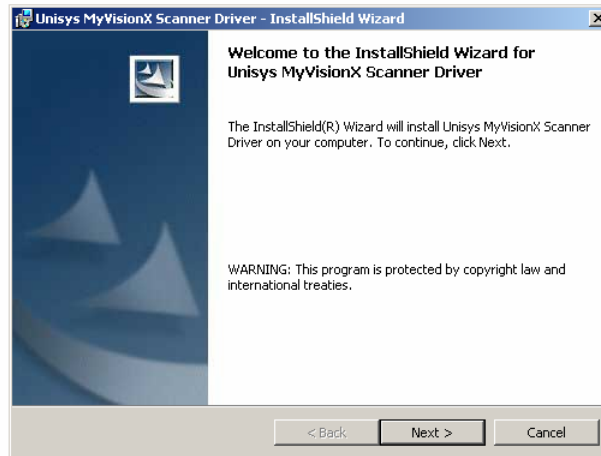


Figure 7: Contents of the Panini MyVisionX scanner driver ZIP file

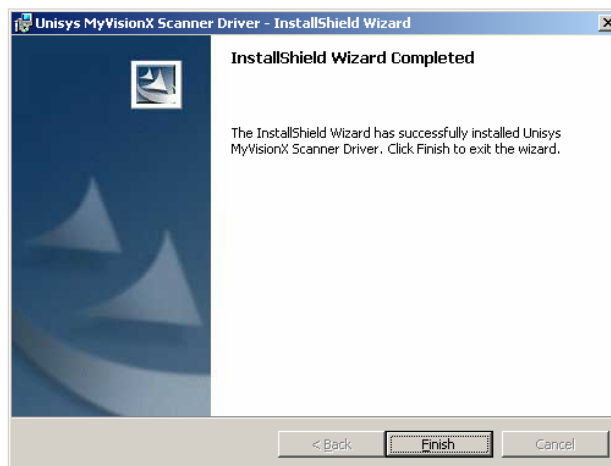
Double-click on the “**setup**” icon to continue the scanner driver installation. This will launch the **InstallShield Wizard**:



Follow the prompts of the **InstallShield Wizard** to complete the scanner driver software installation.

NOTES:

- Ensure that the scanner is not connected to the PC on which you are installing the scanner drivers. The **InstallShield Wizard** will prompt you to verify that the scanner is not connected to the PC.
- The **InstallShield Wizard** will run twice. After clicking the “**Finish**” button, the **InstallShield Wizard** will immediately launch and run again. This is normal. At the conclusion of the second installation phase, this screen appears:



Click “**Finish**” to complete the scanner driver installation. **Reboot your PC before proceeding to the next step.**

RDM

Coming soon...

Step 4: Attaching the scanner to your PC

Plug the USB cable into your scanner, and then attach the scanner to an available USB port on the PC where you installed the scanner drivers.

The **Found New Hardware Wizard** should autorun after attaching the scanner:

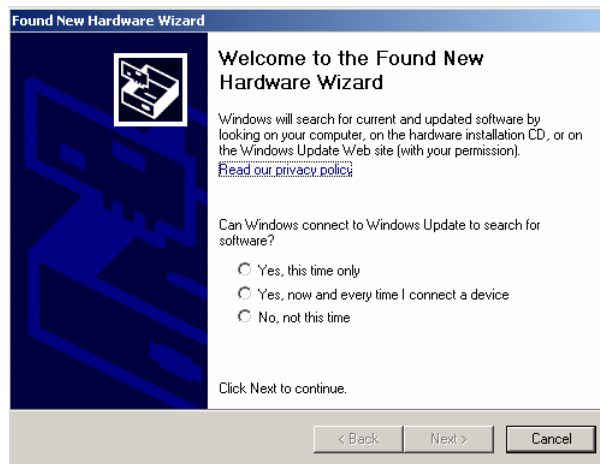


Figure 8: Found New Hardware Wizard

Follow the prompts onscreen to allow the wizard to run:

- To “*Can Windows connect to Windows Update to search for software?*” reply “**No, not this time**”
- To “*What do you want the wizard to do?*” reply “**Install the software automatically**”
- The following alert message may appear as the wizard runs:



Figure 9: Hardware installation alert message

If this alert appears, simply click “**Continue Anyway**”

- After the **Found New Hardware Wizard** finishes running as depicted below, click the “**Finish**” button:

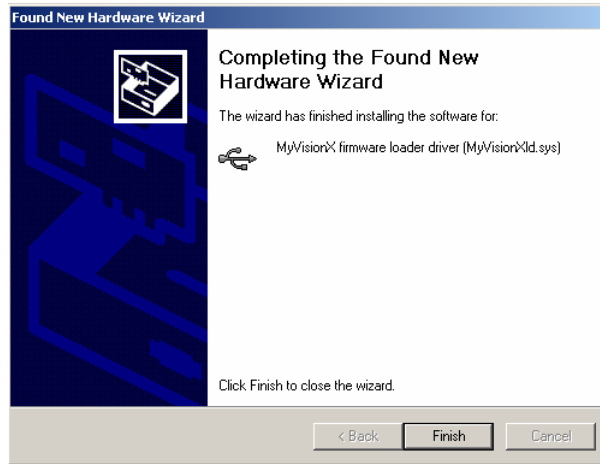


Figure 10: Completing the Found New Hardware Wizard

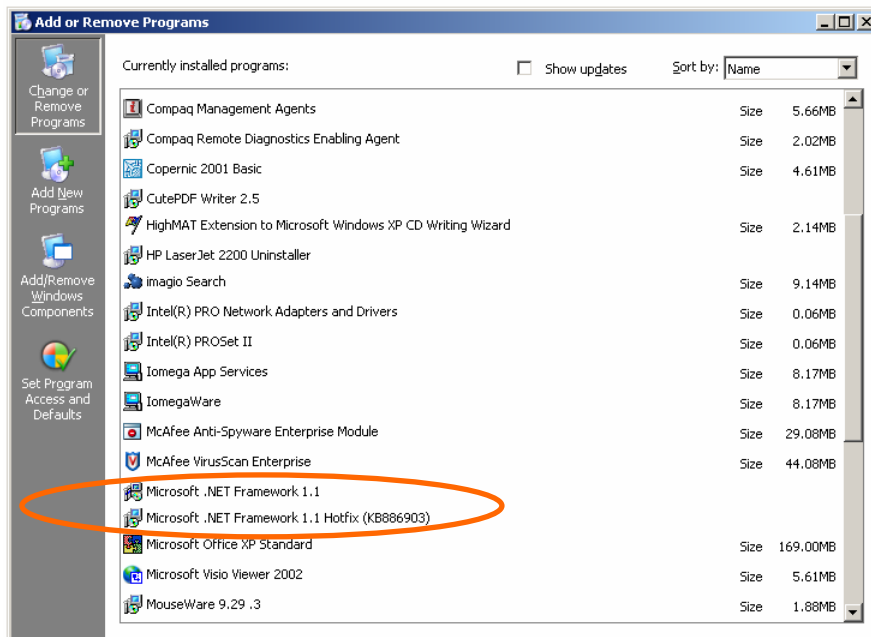
NOTE: When installing a Panini MyVisionX scanner, it is normal for the **Found New Hardware Wizard** to run twice. After the Wizard runs the first time, it will autorun again. Simply repeat the process described in this section to finish the installation.

Step 5: Installing the Check Capture SmartClient

Verifying .NET Compatibility

Before beginning the SNB Check Capture SmartClient installation, verify that your PC has Microsoft .NET 2.0 installed:

1. Click the “**Start**” button and go to the **Control Panel**
2. Select **Add/Remove Programs**
3. Scroll through the list of installed programs and look for an entry that says **Microsoft .NET Framework** – see the example below:



In the example above, the PC on which the SmartClient will install does not have the prerequisite level of Microsoft .NET framework installed. If your PC does have the prerequisite level installed, skip to the next section. If it does not, continue with the next step in this process.

4. If it does not, visit the Microsoft website to download and install .NET 2.0. From the Microsoft home page, click the **Downloads & Trials** link. Visit the **Download Center** to select .NET for downloading and installation.
5. Run the file that was downloaded (dotnetfx.exe) to complete the installation of .NET Framework 2.0 (or later version).

Installing the SmartClient software

Visit the SNB Check Capture tech support page:

http://www.banksnb.com/business/cash_mgmt/collections/checkcap_support.asp

Click on the “Download & Install SNB Check Capture SmartClient” link:

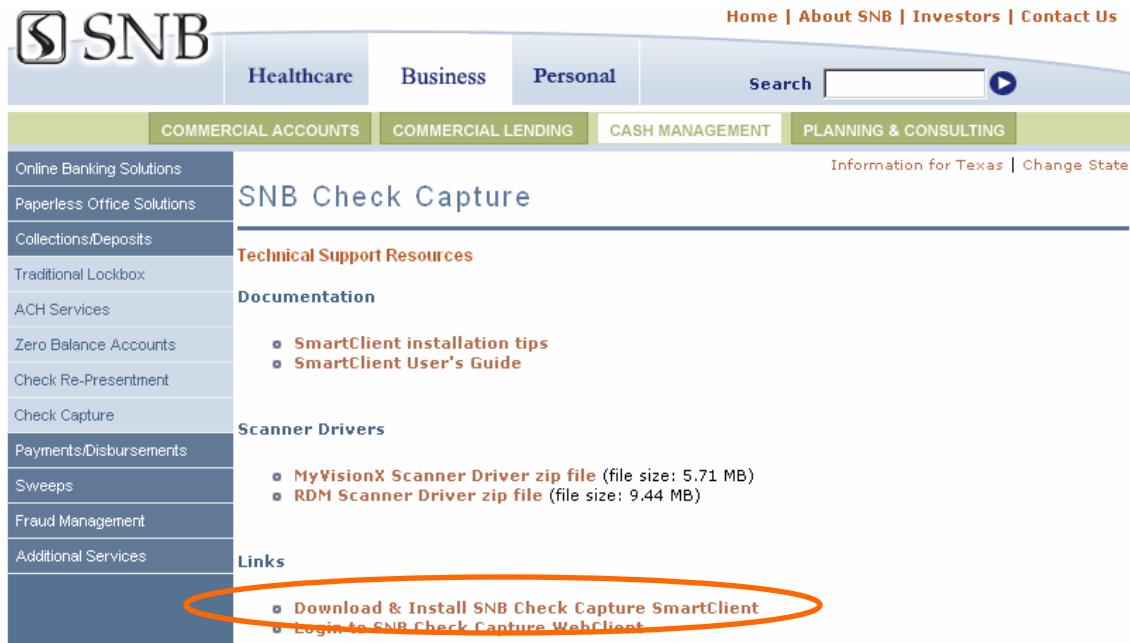


Figure 11: SNB Check Capture Support Page

The SmartClient installation will commence. Click the “Install” button to proceed:

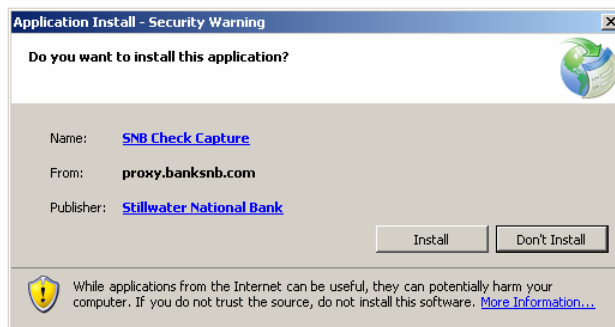


Figure 12: SmartClient installation dialogue box

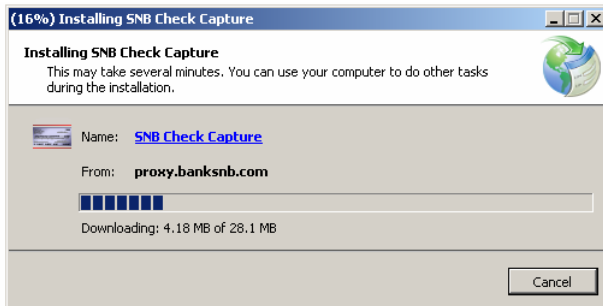


Figure 13: SmartClient installation progress dialogue box

After the installation completes, the SNB Check Capture login dialogue box appears:



Figure 14: SmartClient login dialogue box

Use the login credentials provided to you by SNB to login and begin using the SNB Check Capture SmartClient.

When you login for the first time, you will be prompted to update your location and scanner:

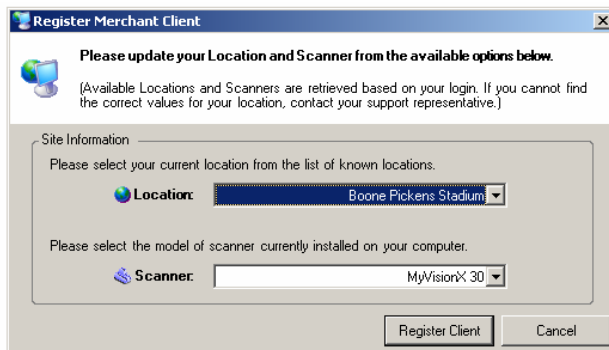


Figure 15: SmartClient location & scanner registration

Refer to the **SNB Check Capture User's Guide** for detailed usage information.

WebClient Setup

The SNB Check Capture WebClient is accessed as a service via the internet and as such, requires no installation. To login, simply visit the SNB Check Capture web page:

http://www.banksnb.com/business/cash_mgmt/collections/checkcap.asp

Click on the **WebClient** login icon:

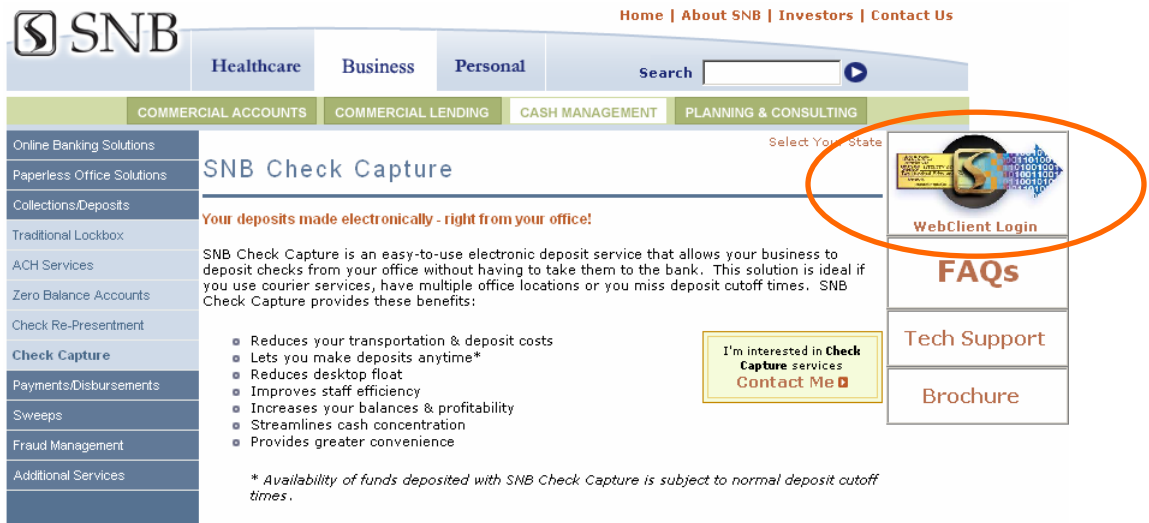


Figure 16: SNB Check Capture web page

The WebClient login page appears:

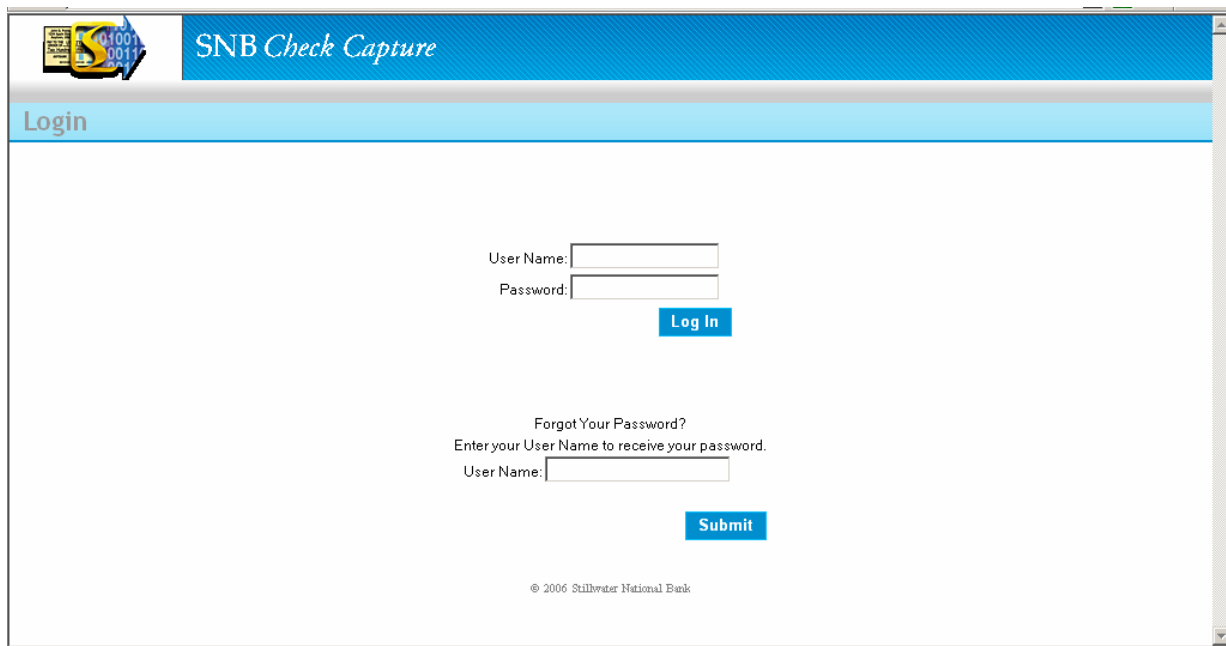


Figure 17: WebClient login page

Please refer to the SmartClient or WebClient User's Guide for detailed instructions on using SNB Check Capture.